

---

## Corporate Parenting Advisory Committee

---

MONDAY, 8TH OCTOBER, 2012 at 19:15 HRS - CIVIC CENTRE, HIGH ROAD, WOOD GREEN, N22 8LE.

MEMBERS: Councillors Allison, Brabazon, Dogus, Reece, Solomon, Stennett and Waters (Chair)

### **AGENDA**

**1. APOLOGIES FOR ABSENCE (IF ANY)**

**2. URGENT BUSINESS**

The Chair will consider the admission of late items of urgent business. Late items will be considered under the agenda item they appear. New items will be dealt with at item 11 below.

**3. DECLARATIONS OF INTEREST**

A member with a personal interest in a matter who attends a meeting of the authority at which the matter is considered must disclose to that meeting the existence and nature of that interest at the commencement of that consideration, or when the consideration becomes apparent.

A member with a personal interest in a matter also has a prejudicial interest in that matter the interest is one which a member of the public with knowledge of the relevant facts would reasonably regard as so significant that it is likely to prejudice the member's judgement of the public interest.

**4. ACTIONS ARISING FROM THE MEETING WITH ASPIRE**

Prior to the start of the meeting, the Committee will have met with Aspire, a youth led project group of Young people, that are currently in the care of the council. The young people will have put forward their vision and priorities as a group. As Corporate parents the committee will agree the actions, arising from this discussion, to be taken forward by the Children's Service and monitored by the Committee over the coming year.

**5. MINUTES (PAGES 1 - 4)**

To consider the minutes of the meeting held on 04 September 2012.

**6. MATTERS ARISING**

**7. PERFORMANCE MANAGEMENT : CHILDREN AND FAMILIES (PAGES 5 - 28)**

This report sets out performance data and trends for an agreed set of measures relating to looked after children.

**8. ACADEMIC PROGRESS REPORT FOR HARINGEY CHILDREN IN CARE 2012 (PAGES 29 - 36)**

Members to consider information on the progress and results for Children in Care at the end of Reception, Key Stages 1, and 2 and 4.

**9. EXCLUSION OF THE PRESS AND PUBLIC**

That the press and public be excluded from the meeting for consideration of items 10&11 as they contain exempt information as defined in Section 100a of the Local Government Act 1972 (as amended by Section 12A of the Local Government Act 1985): paras 1 & 2: namely information relating to any individual, and information likely to reveal the identity of an individual.

**10. ACADEMIC PROGRESS REPORT FOR HARINGEY CHILDREN IN CARE 2012 (PAGES 37 - 40)**

The Committee to consider exempt information pertaining to item 8.

**11. PROGRESS REPORT FOLLOWING A RECENT OFSTED INSPECTION OF A COUNCIL CHILDREN'S HOME (PAGES 41 - 54)**

This report sets out the action taken following the recent OFSTED report on a council children's home.

**12. ANY OTHER BUSINESS**

Date of next meeting 04<sup>th</sup> December 2012 6.30pm

Joint meeting with Children's Safeguarding Policy and Practice Committee on 29 October 2012 7.30pm.

David McNulty  
Head of Local Democracy and Member Services  
5<sup>th</sup> Floor  
River Park House  
225 High Road  
Wood Green  
London N22 8HQ

Ayshe Simsek  
Principal Committee Coordinator  
Tel: 0208 489 2929  
Fax: 0208 881 5218  
Email: [ayshe.simsek@haringey.gov.uk](mailto:ayshe.simsek@haringey.gov.uk)

This page is intentionally left blank

**MINUTES OF THE CORPORATE PARENTING ADVISORY COMMITTEE**  
**TUESDAY, 4 SEPTEMBER 2012**

Councillors Dogus, Egan, Hare, Peacock, Reece, Solomon and Waters (Chair)

Apologies Councillor Allison, Brabazon and Stennett.

Also Present: Libby Blake, Attracta Craig, Emma Cummergen, Janice Darling, Margaret Gallagher, Debbie Haith, Leslie Kettles, Eve Pelekanos, Wendy Tomlinson.

<b>MINUTE NO.</b>	<b>SUBJECT/DECISION</b>	<b>ACTION BY</b>
<b>CPAC172</b>	<b>APOLOGIES FOR ABSENCE (IF ANY)</b>  Apologies for absence were received from Cllrs Allison, Brabazon and Stennett. Cllrs Hare, Peacock and Egan respectively attended in their absence.	
<b>CPAC173</b>	<b>MINUTES</b>  The minutes of the meeting held on 17 July 2012 were agreed as an accurate record of the meeting.	
<b>CPAC174</b>	<b>MATTERS ARISING</b>  The Committee were updated that the report requested at the last meeting on the transition of care leavers would be deferred to the October Committee meeting and which would permit the inclusion of half year statistical information to provide greater context to discussions. The report would also include details of proposals to expand the remit of the virtual school to provide support for the 16 plus age group.  The Deputy Director provided a short overview of the Council's approach to the naturalisation of CiC (Children in Care) following queries raised by the Committee at the last meeting. Following legal advice, the Council had adopted an approach to seek to secure a child's immigration status prior to them reaching their majority which was in line with other authorities. As the majority of unaccompanied minors in this cohort had indefinite leave to remain status anyway, the Council would not routinely actively seek to support any applications for naturalisation but would consider any requests on a case by case basis. The overriding premise was that young people should be encouraged to make their own decision about naturalisation once they reached their majority in recognition of the significance of the decision.	Debbie Haith  Attracta Craig
<b>CPAC175</b>	<b>PERFORMANCE MANAGEMENT: CHILDREN AND FAMILIES</b>  The Committee considered a new format performance report centred on monitoring against an agreed set of measures relating to CiC with	

**MINUTES OF THE CORPORATE PARENTING ADVISORY COMMITTEE  
TUESDAY, 4 SEPTEMBER 2012**

	<p>accompanying service and performance comments provided for context. It was intended that the new format would facilitate the monitoring of long term trends and benchmarking with other authorities.</p> <p>It was updated that the number of CiC in Haringey remained on a downward trajectory although still remained significantly higher than the statistical neighbour average. The service were continuing efforts to support this reduction through division of the CiC population into defined cohorts to allow performance to be examined in greater detail and to identify any underlying trends or issues.</p> <p>The Committee queried the process for the setting of Haringey performance targets and whether in some instances they were challenging enough, such as the 95% target for CiC visits. Officers advised that Haringey specific targets were developed based on a series of principles including performance in the last year and that of statistical neighbour authorities and the resource provision of the service. A commitment was however made for a review of these targets by the CYPS Senior Management Team in conjunction with the Cabinet Member for Children as part of the transformational journey of the service toward excellence and determining what an outstanding service would look like.</p> <p>With regards to the ongoing IT issue that continued to impact on the performance monitoring of CiC case reviews within required timescales, efforts were continuing to seek a resolution with the IT system provider. In the interim, local monitoring arrangements had been put in place. It was anticipated that an accurate performance figure would be reported to the next Committee meeting.</p> <p>With regards to the performance data provided for CiC visits, further clarification was requested within the comments box of future reports on the variance in timescales imposed for visits.</p> <p>The Committee extended their praise for the new format of the performance report and its ease of reading.</p>	<p>Debbie Haith</p> <p>Eve Pelekanos</p>
<b>CPAC176</b>	<p><b>ANNUAL REPORT OF THE FOSTERING SERVICE</b></p> <p>The Committee considered the annual performance report on the fostering service setting out the structure, aims and duties of the service as well as performance data from the last twelve months.</p> <p>The Committee expressed concern over the relatively low number of foster carers recruited from the last publicity campaign. It was confirmed that although the campaign was on course to meet its target for the recruitment of 47 new carers over a three year period, the number of current carers deregistering remained of continuing concern and it was agreed that the Council needed to be more ambitious with regards to recruitment. The Committee discussed the inherent difficulties in trying to achieve a balance between not discouraging prospective carers but also being upfront about the strict eligibility criteria in place related to the needs</p>	

**MINUTES OF THE CORPORATE PARENTING ADVISORY COMMITTEE  
TUESDAY, 4 SEPTEMBER 2012**

	<p>of the child such as restrictions in most instances on carers being in full time work.</p> <p>It was advised that in an effort to retain focus on increasing recruitment, the proposed restructure of the service would facilitate this through reconfiguring the service into two teams to provide separation between the two distinct functions of the service: the recruitment and assessment of carers and supporting foster carers. It was agreed that the Committee would receive an update report on the restructure and new arrangements in six months time.</p> <p>The Committee suggested a number of other avenues that could be explored by officers to increase recruitment of carers including promotion at Area Committees, the opportunity for a more targeted approach aimed at the Turkish community and the feasibility of including fostering information in the annual Council Tax leaflet sent to borough residents. The Committee also discussed the approach to promoting the financial support provided to foster careers, particularly in recognition of the current economic climate. It was advised that the communications team had undertaken detailed focus group research for the last recruitment campaign including the financial inducements for fostering. In consideration of the findings of this exercise, it had been determined to provide details of the financial support available within the fostering adoption leaflet sent out to prospective carers but not on wider publicity material such as posters.</p>	<p>Janice Darling</p> <p>Janice Darling</p>
<b>CPAC177</b>	<p><b>DRAFT PERMANENCY POLICY</b></p> <p>The Committee considered a draft permanency policy document developed to steer the securing of permanent care arrangements for CiC, in particular ensuring permanency planning was considered as soon as the child was taken into care to facilitate timely and appropriate decision making. Although the policy would primarily operate as a social work framework for officers, it would also set out the roles and responsibilities of Councillors in this regard. In light of this, the Committee at this point had the opportunity to define the role they wished to take as corporate parents in this area including providing informed challenge and a local policy steer required as part of the transition of the service towards excellence. This would include providing input on significant issues going forward such as the use of Special Guardianship Orders, trans-racial adoptions etc. The policy would ultimately be submitted for approval by Cabinet once the Committee had provided input.</p> <p>The Committee agreed their input into the policy needed to be considered a priority going forward for further exploration and as such, it was agreed that a proposed framework would be circulated proposing a way for the Committee to provide informed input into the policy and to resolve their role in this area. The Committee also asked officers to develop a routemap of a typical child through the care process including key milestones that should be met, in order to assist Members in developing their understanding of the process.</p>	<p>Debbie Haith</p> <p>Debbie Haith</p>

**MINUTES OF THE CORPORATE PARENTING ADVISORY COMMITTEE  
TUESDAY, 4 SEPTEMBER 2012**

<b>CPAC178</b>	<b>EXCLUSION OF THE PRESS AND PUBLIC</b>  The press and public were excluded from the meeting for consideration of the following items as they contained exempt information as defined in Section 100a of the Local Government Act 1972(as amended by Section 12A of the local Government Act 1985), paras1 & 2, namely information relating to any individual and information likely to reveal the identity of an individual.	
<b>CPAC179</b>	<b>FOSTERING MARKETING AND RECRUITMENT PLANS</b>  The Committee considered the marketing strategy for the recruitment of foster carers including underpinning fostering activity plans and marketing activity plans and associated objectives. The importance of the collaborative working approach as part of North London Fostering consortium was emphasised which as well as increasing methods of public engagement, also provided the opportunity for future benchmarking of the service.  The Committee noted the strategy and plans.	
<b>CPAC180</b>	<b>VERBAL UPDATE ON CHILDREN'S HOMES INSPECTIONS</b>  The Committee received a verbal update on the findings of a recent Ofsted inspection of the Council's short stay children's home. Assurances were provided that the issues raised did not relate to the safeguarding of children and that the inspection report and accompanying action plan would be submitted to a future meeting of the Committee for consideration. It was also agreed that the Regulation 33 inspection reports for the home would be regularly reported up to the Committee, with Members who had previously attended the training invited to take part in inspections.	Wendy Tomlinson
<b>CPAC181</b>	<b>DATE OF THE NEXT MEETING</b>  8 October 2012	

Cllr Ann Waters

Chair





**Haringey** Council

<b>Report for:</b>	<b>Corporate Parenting Advisory Committee 08 October 2012</b>	<b>Item Number:</b>	
<b>Title:</b>	<b>Corporate Parenting Performance Assessment- Performance for the year to August 2012</b>		
<b>Report Authorised by:</b>	<b>Debbie Haith/ Eve Pelekanos</b>		
<b>Lead Officer:</b>	<b>Margaret Gallagher / Adele Cooper</b>		
<b>Ward(s) affected:</b>  All	<b>Report for Key/Non Key Decision:</b>  NA		

## 1. Introduction

This report sets out performance data and trends for an agreed set of measures relating to looked after children. Section 2 provides an overall assessment of performance in the service and performance highlights. Appendix 1 provides a series of tables and graphs for each of these measures, grouped by topic, showing monthly data, performance against target, long term trends and benchmarking where applicable. It also contains performance and service comments for each area to provide context.

## 2. Performance Highlights

- The **number of children in care** is reducing steadily, down to 548 in August from 574 at the end of March 2012. The 548 includes 28 unaccompanied asylum seeking children. The trend in London suggests falling numbers but data published by the DfE recently shows an increase nationally of 2% compared to 2011 and 13% compared to March 2008. In Haringey there has been a 4.7% reduction compared to March 2011 and an increase of 29% compared to 2008.
- The percentage of up to date **children in care visits** continues to exceed the 95% target.
- 16 children were **missing from care** during the month of August. In most cases we have contact with the young person.



## Haringey Council

- Provisional data for the end of August suggests that 93% of children in care **cases** were **reviewed within required timescales**.
- The proportion of **children placed in Haringey provision** has declined since April 2012 and is at 33% for August, below the 38% target.
- Of the 548 children in care 26% were **placed within Haringey**, and 74% were placed outside Haringey. Of the newly looked after children in the month who remained looked after at the end of the month 2 out of 8 children were placed 20 miles+ from home.
- Foster care (in house) placements are showing a reducing trend (from 202 in April to 181 in August) although and improvement on previous months figures.
- Indicators around **stability of placements** are in line with statistical neighbours.
- Performance on **care leavers in suitable accommodation and in education, training and employment (ETE)** are below targets set but monthly numbers are small and should be interpreted with care. For those care leavers who were not in suitable accommodation or in ETE in August this was due to them being held in custody or non eligibility as all their rights of appeal had been exhausted or they had no recourse to public funds.
- There have been 9 **adoptions** in the year to August, on track to meet target of 15. There have been 14 **special guardianship orders** (SGO) compared with 5 at this time last year.
- The 1 **adoption** that took place in August took 571 days so the year to date position is 722 days. This is a similar figure to the 2011/12 figure of 715 days but above the 639 day national threshold (for the rolling 3 years 2010-13). The service are looking at setting targets specific to Haringey taking account of the children already in the system and the new children coming into the system with an aim to outstrip the 639 day threshold for new children.
- There are 61 children whose **plan for adoption** has been **approved** as at the end of August, 14 of these have been placed for adoption. If the 14 who have been placed for adoption are all adopted this year, the average days will fall to 692. Of the 61 children 19 have had the decision that they should be placed, made this year and the average days looked after for these children as at the 1<sup>st</sup> September is 450 days (this figure will continue to accumulate until all these children are placed). For the 19 children (who are not yet placed) where a decision was made this year, the average days for that adoption making (ADM) decision to be made is 348.

### 3. Appendices

- Appendix 1: Performance Analysis and Benchmarking

## Performance Analysis and Benchmarking – Children Looked After

### Contents

Looked After Children – Volumes and Activity	
Op389 Children in care including unaccompanied asylum seeking children	
Op389a The rate of Children in care per 10,000 pop	
Op415 Children becoming looked after	
Op416 Children ceasing to be looked after	
Op457 Number of LAC who ceased to be looked after who had been looked after for less than a month	
Op414 Percentage of Children becoming looked after previously subject to CP plan	
Op453 Total No. days children have been in care (Excluding placed at home)	
HY32 Percentage of children placed in Haringey Provision	
Op362 Children in Care visits	
Op417 Care Proceedings Initiated- (No. of children)	
Op 419 Number of children missing/absconded from care at any point in the month	
Op366 Children in care cases which were reviewed within required timescales	

#### Looked After Children – Stability of Placements

HY62 Stability of placements of looked after children: number of moves	
Op63 Stability of placements of looked after children: length of placement	

#### Care Leavers

Op147 Care leavers in suitable accommodation	
Op148 Care leavers in education, employment or training	

#### Adoption and Special Guardianship Orders

Op 418 Number of adoptions/special guardianship orders	
Op 418a Number of adoptions	
Op 418b Number of special guardianship orders	
Op391 Timeliness of placements of looked after children for adoption following an agency decision that the child should be placed for adoption	

HY483

Op486

Average days from becoming looked after to being placed for adoption for children adopted in period  
Placed for adoption within 21 months of becoming looked after

For further long term trend data, benchmarking, contextual data and performance against national thresholds, please refer to Appendix B, the Adoption Scorecard

quarterly update. Please note that this is only updated quarterly.

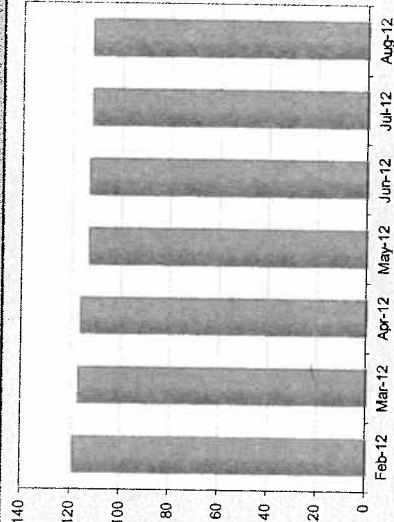
Where available, benchmarking is provided for England, London and/or Haringey's Statistical Neighbours. Haringey's Statistical Neighbours group is defined by Ofsted based on socio-demographic information relating specifically to Children's Services and comprises Croydon, Greenwich, Hackney, Hammersmith and Fulham, Islington, Lambeth, Lewisham, Southwark, Waltham Forest and Wandsworth. The averages provided for benchmarking in this report are simple means.

### Looked After Children - Volumes and Activity

This section contains a series of measures which help to provide a picture of the current children in care cohort and the service provided to them, covering the following areas: the numbers of children in care (Op389, Op389a); the movement of children in and out of care and their circumstances (Op415, Op416, Op457, Op414); service activity (Op458, HY32, Op382, Op417, Op419, Op386).

#### OP389 Children in care including unaccompanied asylum seeking children OP389a The rate of Children in care per 10,000 pop

Recent trend (last 6 months)	Key	Feb-12	Mar-12	Apr-12	May-12	Jun-12	Jul-12	Aug-12	Traffic Light
Haringey Number of CiC		584	574	568	556	554	549	548	
Haringey Rate per 10,000 pop		119	117	116	113	113	112	112	Data Only
Children placed within Haringey		-	-	-	-	-	-	26%	
Children placed outside Haringey		-	-	-	-	-	-	74%	



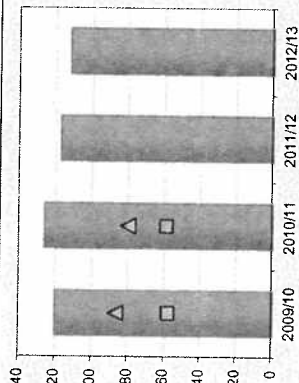
#### Performance Comment

- There were 548 children in care on the last day of August (520 excluding unaccompanied minors).
- This equates to a rate of 112 per 100,000 population, a significant reduction compared to this time last year (129).
- The rate remains higher than the statistical neighbour average (80 as at March 2011) and significantly higher than the England average (59).

#### Service Comment

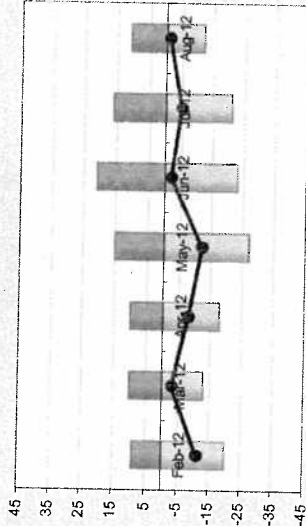
This continues to be monitored to ensure numbers are reduced appropriately and children remain safeguarded at home.

Long term trend (last 6 years)	Key	2006/07	2007/08	2008/09	2009/10	2010/11	2011/12	2012/13	Traffic Light
Haringey Number of CiC		-	427	492	591	618	574	548	
Haringey Rate per 10,000 pop		-	-	-	120	126	117	112	Data Only
Statistical Neighbours	Δ	96	91	88	87	80	-	-	
England	□	55	54	55	58	59	-	-	



Op415 Children becoming looked after and  
Op416 Children ceasing to be looked after

Recent trend (last 6 months)	Key	Feb-12	Mar-12	Apr-12	May-12	Jun-12	Jul-12	Aug-12	Traffic Light
Haringey (becoming)	●	9	10	10	15	21	16	11	
Haringey (ceasing)	○	-20	-13	-18	-27	-23	-21	-12	
Haringey Net Increase / Decrease	◆	-11	-3	-8	-12	-2	-5	-1	



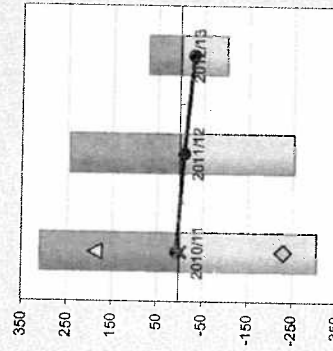
**Performance Comment**

- 11 children became looked after in August and 12 ceased to be looked after.
- 73 children have become looked after in the year to date and 101 have ceased to be looked after.
- The cohort has decreased by 28 children in the year to date.

**Service Comment**

Stability in the long term social work teams has resulted in more timely management of care plans. Children are moving to more permanent care arrangements such as Special Guardianship and Adoption and where appropriate children are returning to live with family members.

Long term trend (last 6 years)	Key	2006/07	2007/08	2008/09	2009/10	2010/11	2011/12	2012/13	Traffic Light
Haringey (becoming)	●	-	-	-	-	311	245	73	
Haringey (ceasing)	○	-	-	-	-	-304	-253	-101	
Haringey Net Increase / Decrease	◆	-	-	-	-	7	-8	-28	
Stat. Neighbours (becoming)	△	208	192	193	216	189	-	-	
Stat. Neighbours (ceasing)	◇	-219	-212	-208	-219	-229	-	-	
Statistical Neighbours Net Increase	★	-11	-20	-15	-3	-40	-	-	



OP457 Number of looked after children who ceased to be looked after for less than a month

Recent trend (last 6 months)	Key	Feb-12	Mar-12	Apr-12	May-12	Jun-12	Jul-12	Aug-12	Traffic Light
Haringey		3	3	1	0	5	0	3	Data Only
Previous Year	Key								
Haringey (previous year)				4	12	16	6	3	

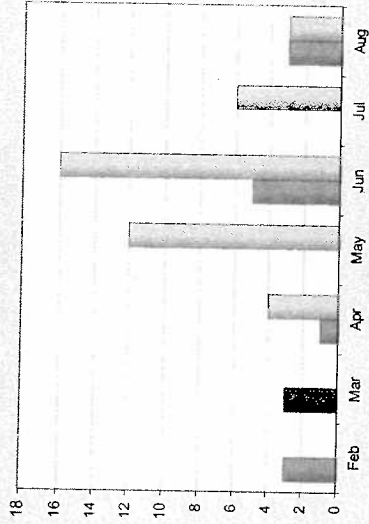
#### Performance Comment

- In the year to date, 9 children have been looked after for less than a month before ceasing to be looked after, compared to 41 for the same period last year.

#### Service Comment

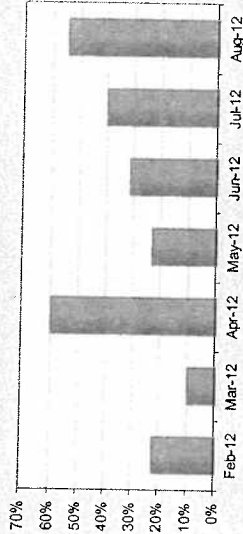
The service has focused on reducing the number of short term admissions to care where alternative safe arrangements can be made whilst assessments are undertaken.

There is currently no available benchmarking for this indicator. Strategy and Business Intelligence undertake regular environment scanning to ensure that benchmarking data is as complete and up to date as possible



# OP414 Percentage of Children becoming looked after previously subject to Child Protection plan

Recent trend (last 6 months)	Key	Feb-12	Mar-12	Apr-12	May-12	Jun-12	Jul-12	Aug-12	Traffic Light	Data Only
Haringey		22%	10%	60%	23%	31%	40%	55%		



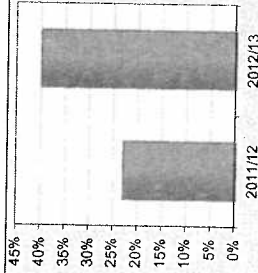
## Performance Comment

The year to date figure is 40% (26 out of 65 children), up from 23% last year.

## Service Comment

Caring for children away from their family home should be used when it is not possible for children to remain safely and securely at home. Child protection plans are put in place where there are significant concerns about a child's welfare, it is therefore expected that a high proportion of children and their families would have been supported whilst being subject to a protection plan before they came into care.

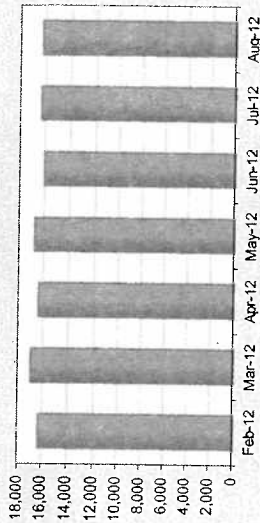
Long term trend (last 6 years)	Key	2006/07	2007/08	2008/09	2009/10	2010/11	2011/12	2012/13	Traffic Light	Data Only
Haringey		-	-	-	-	-	23%	40%		



There is currently no available benchmarking for this indicator. Strategy and Business Intelligence undertake regular environment scanning to ensure that benchmarking data is as complete and up to date as possible

**OP458 Total No. days children have been in care (Excluding placed at home)**

Recent trend (last 6 months)	Key	Feb-12	Mar-12	Apr-12	May-12	Jun-12	Jul-12	Aug-12	Traffic Light
Haringey		16,268	16,950	16,332	16,750	16,013	16,309	16,219	Data Only



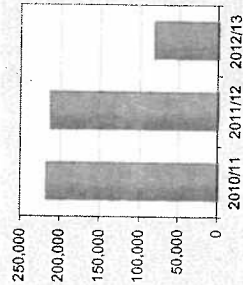
**Performance Comment**

- The total number of days in care in August was 16,219, slightly down on the previous month.
- The year to date figure of 81,623 is significantly lower than the same time last year (90,674).
- The number of looked after children on the last day of the month is monitored but this indicator was introduced to track the volume of work as the number of looked after children would not capture children becoming looked after or ceasing to be looked after during the month which this measure does.
- This measure is looked at alongside children who ceased to be looked after who had been looked after for less than a month where there is a decreasing trend.

**Service Comment**

The data demonstrates the reduction in the number of nights care provided which is also another method of monitoring the use of care over time.

Long term trend (last 6 years)	Key	2006/07	2007/08	2008/09	2009/10	2010/11	2011/12	2012/13	Traffic Light
Haringey		-	-	-	-	217,488	212,812	81,623	Data Only

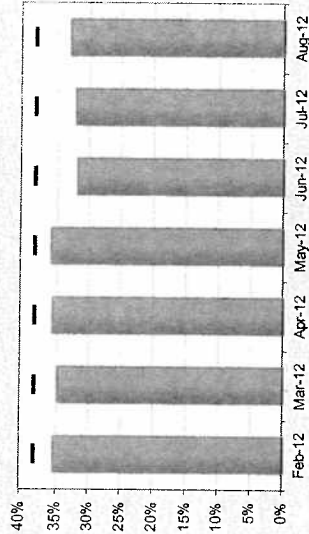


There is currently no available benchmarking for this indicator. Strategy and Business Intelligence undertake regular environment scanning to ensure that benchmarking data is as complete and up to date as possible



### HY32 Percentage of children placed in Haringey Provision

Recent trend (last 6 months)	Key	Feb-12	Mar-12	Apr-12	May-12	Jun-12	Jul-12	Aug-12	Traffic Light
Haringey	■	35.4%	34.8%	35.6%	35.8%	31.9%	32.2%	33.0%	Red
Haringey Target	I	38%	38%	38%	38%	38%	38%	38%	●



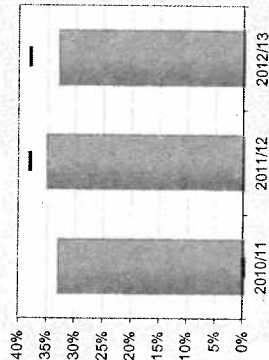
#### Performance Comment

- The percentage in Haringey Provision has declined since April and remains well below the 38% target.
- 181 out of 548 children were in Haringey provision in August, compared to 202 out of 568 in April. A reduction in the number of in house foster care placements and those placed for adoption (from 202 in April to 181 in August) has also been noted.

#### Service Comment

Work is being undertaken to maximise the use of in-house foster carers. This includes more consistently reviewing those who are not able to foster for a short period of time (allegations / holidays / other breaks). All fostering vacancies are now considered at Resources Panel which will ensure maximisation of internal resources. We are also updating our training plan for foster carers to support them to manage a greater range of children and young people.

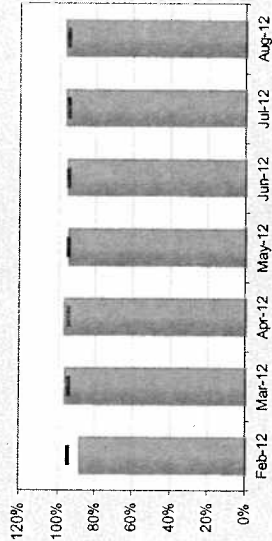
Long term trend (last 6 years)	Key	2006/07	2007/08	2008/09	2009/10	2010/11	2011/12	2012/13	Traffic Light
Haringey	■	-	-	-	-	33.0%	35.0%	33.0%	Red
Haringey Target	I	-	-	-	-	-	38%	38%	●



There is currently no available benchmarking for this indicator. Strategy and Business Intelligence undertake regular environment scanning to ensure that benchmarking data is as complete and up to date as possible

### Op382 Children in Care visits (% of visits due which were completed within the 6 week timescale)

Percent trend (last 6 months)	Key	Feb-12	Mar-12	Apr-12	May-12	Jun-12	Jul-12	Aug-12	Traffic Light
Haringey		88.4%	96.7%	97.0%	94.8%	95.4%	96.5%	96.3%	Green
Haringey Target	I	95%	95%	95%	95%	95%	95%	95%	



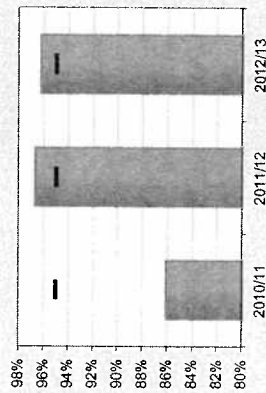
#### Performance Comment

- 96.3% of children in care visits are up to date, above the 95% target.  
 - This is based on a 6 week timescale or for lower risk children 3 monthly timescale where this has been notified to performance

#### Service Comment

Staff in the service worked hard to maintain visits during the olympic and school holiday period. Whilst the present figure is good we are still striving to reach 100%.

Long term trend (last 6 years)	Key	2008/07	2007/08	2008/09	2009/10	2010/11	2011/12	2012/13	Traffic Light
Haringey		-	-	-	-	86.1%	96.7%	96.3%	Green
Haringey Target	I	-	-	-	-	95%	95%	95%	



There is currently no available benchmarking for this indicator. Strategy and Business Intelligence undertake regular environment scanning to ensure that benchmarking data is as complete and up to date as possible

## Op417 Care Proceedings Initiated- (No. of children)

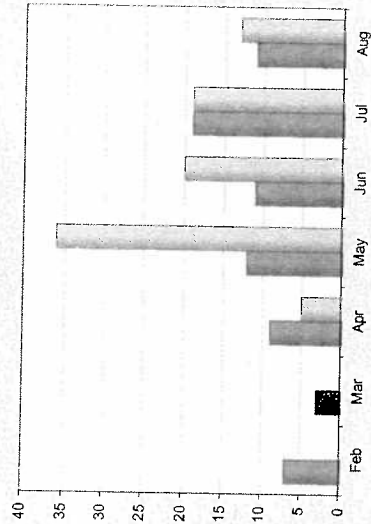
Recent trend (last 6 months)	Key	Feb-12	Mar-12	Apr-12	May-12	Jun-12	Jul-12	Aug-12	Traffic Light
Haringey		7	3	9	12	11	19	11	Data Only
				Apr-11	May-11	Jun-11	Jul-11	Aug-11	
Haringey (previous year)				5	36	20	19	13	

**Performance Comment**

- There were 11 children where care proceedings were initiated in August and 62 in the year to date.
- The year to date figure is lower than the 93 care proceedings initiated by this point last year.

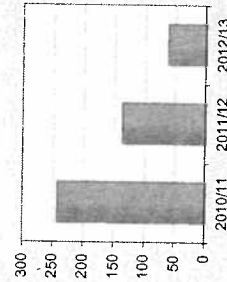
**Service Comment**

There has been a reduction in the number of care proceedings issued compared to the same period last year. This figure is monitored at the monthly joint Legal Services and Children and Families meetings to ensure court processes are used appropriately.



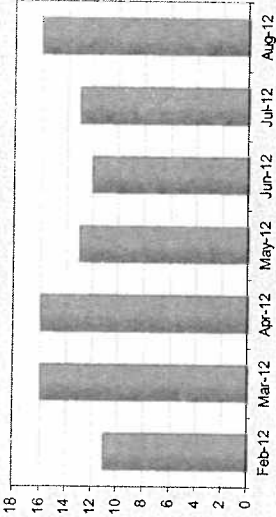
Long term trend (last 6 years)	Key	2006/07	2007/08	2008/09	2009/10	2010/11	2011/12	2012/13	Traffic Light
Haringey		-	-	-	-	243	137	62	Data Only

There is currently no available benchmarking for this indicator. Strategy and Business Intelligence undertake regular environment scanning to ensure that benchmarking data is as complete and up to date as possible



**Op 419 Number of children missing/absconded from care at any point in the month**

Recent trend (last 6 months)	Key	Feb-12	Mar-12	Apr-12	May-12	Jun-12	Jul-12	Aug-12	Traffic Light
Haringey		11	16	16	13	12	13	16	Data Only



**Performance Comment**

- 16 children were missing from care during the month of August and 3 remained missing at the end of the month.
- The number of children missing is similar to the level seen this time last year.
- The quarterly numbers which monitor children who have gone missing in the 3 month period and do not include duplicate children which have gone missing in more than one month has remained fairly consistent.

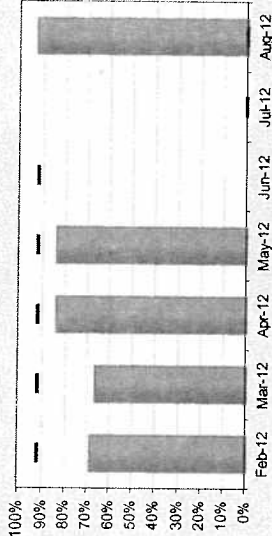
**Service Comment**

During August 10 of the 16 young people who went missing were missing for a period of over 48 hours. In most cases we have contact with the young person and all but one of these young people have now safely returned to their placements. The lead member and DCS have weekly updates on children who are reported as missing.

There is currently no available benchmarking for this indicator. Strategy and Business Intelligence undertake regular environment scanning to ensure that benchmarking data is as complete and up to date as possible

### OP386 Children in care cases which were reviewed within required timescales

Recent trend (last 6 months)	Key	Feb-12	Mar-12	Apr-12	May-12	Jun-12	Jul-12	Aug-12	Traffic Light
Haringey	■	68.6%	66.5%	84.1%	84.1%	-	-	92.9%	Green
Haringey Target		92%	92%	92%	92%	92%	-	-	●



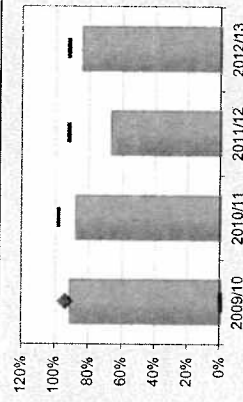
#### Performance Comment

- There has been a problem with the system report that pulls the data for reviews. We are working with the provider but some issues have not been resolved.
- As previously discussed a localised system for reporting has given a provisional figure of 93% which the service feel can be improved upon.

#### Service Comment

The Service have created a localised report which provides the data. The end of August figure is provisional 92.9%. This means that the April and May 2012 figures are incorrect, attempts will made to run reports for these months retrospectively.

Long term trend (last 6 years)	Key	2006/07	2007/08	2008/09	2009/10	2010/11	2011/12	2012/13	Traffic Light
Haringey	■	-	-	-	91.1%	87.8%	66.5%	84.1%	Green
Haringey Target		-	94%	-	-	96%	92%	92%	●
London	◆	91%	93%	92%	94%	-	-	-	



### Looked After Children - Stability of Placements

These measures relate to the stability of placements of looked after children. The first (HY62) is based on the number of placements each child in the cohort has experienced. It gives the percentage of children who have had three or more placements during the last year (the figures shown are therefore for a rolling year e.g. June 2011 to July 2012). The second measure (Op63) is based on the length of placement; it gives the percentage of all children who have been in care for at least 2.5 years who have been in the same placement for at least 2 years.

#### HY62 Stability of placements of looked after children: number of moves

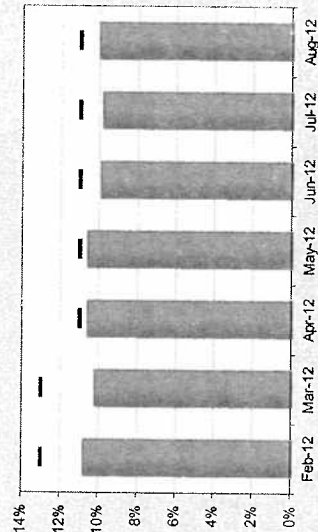
Recent trend (last 6 months)	Key	Feb-12	Mar-12	Apr-12	May-12	Jun-12	Jul-12	Aug-12	Traffic Light
Haringey	■	10.8%	10.2%	10.6%	10.6%	9.9%	9.8%	10.0%	Green
Haringey Target	■	13%	13%	11%	11%	11%	11%	11%	●

#### Performance Comment

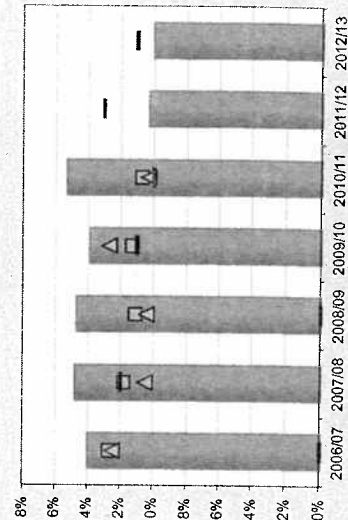
- 55 out of 548 (10%) looked after children have had 3 or more placements in the last year.
- This is within the target and around the level of our statistical neighbours (10.3% for 2010/11).
- The number of children with two placements is also tracked and appears to be increasing (73 or 13% as at August).

#### Service Comment

Extensive work has been done to develop the role of the Resources Panel and the documents which provide information from the LA to providers in order that together we are best placed to match a child or young person with a carer. The aim is that as far as possible, we get the right placement at the point the child first comes into care and that each plan considers a child's long term needs. We are undertaking work to ensure that the monitoring of providers is more systematic and proactive, with the aim of preventing problems that might result in breakdown at the earliest possible stage. The Safeguarding Quality Assurance team did a review of 60 children who have had 2 placement moves and who may be risk of further moves in order to further support the placements and identify trends and issues which will inform commissioning and care planning.



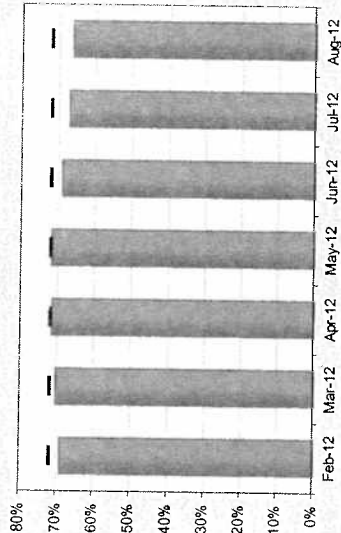
Long term trend (last 6 years)	Key	2006/07	2007/08	2008/09	2009/10	2010/11	2011/12	2012/13	Traffic Light
Haringey	■	14.0%	14.8%	14.7%	13.9%	15.3%	10.3%	10.0%	Green
Haringey Target	■	-	12%	-	11%	10%	13%	11%	●
Statistical Neighbours	△	12.5%	10.5%	10.4%	12.7%	10.3%	-	-	
London	◆	12.1%	11.2%	11.1%	11.4%	-	-	-	
England	□	12.7%	11.8%	11.1%	11.3%	10.7%	-	-	





**Op63 Stability of placements of looked after children: length of placement**

Recent trend (last 6 months)	Key	Feb-12	Mar-12	Apr-12	May-12	Jun-12	Jul-12	Aug-12	Traffic Light
Haringey	■	69.1%	70.3%	71.6%	71.8%	68.9%	67.2%	66.3%	Red
Haringey Target	I	72%	72%	72%	72%	72%	72%	72%	●



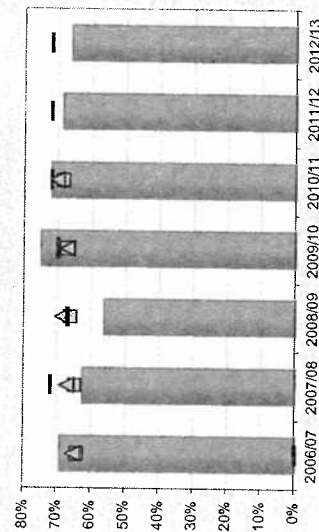
**Performance Comment**

- 66.3% of children under 16 (124 out of 187 cohort) who have been in care for 2.5 years have been in the same placement for at least 2 years.
- There has been a steady decline in children in the same placement for 2 years plus and the percentage is at the lowest it has been since September 2010 although the numbers in care for 2.5 years have been increasing (187 at August 2012 compared with 143 at August 2011).
- Performance is lower than the target of 72% and slightly below statistical neighbour average.

**Service Comment**

Work is underway by the service, assisted by reports from the performance team to understand the children affected and the patterns of placements. It is expected that in some cases children may move placement for positive reasons, for example a planned move from a short term placement to a long term more permanent placement. The service needs to ensure that the moves are not a result of lack of placement choice or poor care planning.

Long term trend (last 6 years)	Key	2006/07	2007/08	2008/09	2009/10	2010/11	2011/12	2012/13	Traffic Light
Haringey	■	69.0%	62.7%	56.3%	75.0%	72.0%	68.6%	66.3%	Red
Haringey Target	I	-	72%	67%	70%	72%	72%	72%	●
Statistical Neighbours	△	65.3%	67.3%	68.7%	67.3%	70.4%	-	-	
London	◆	64.6%	66.8%	68.0%	66.6%	-	-	-	
England	□	64.3%	65.0%	66.2%	67.4%	68.6%	-	-	





### Care Leavers

These measures are based on young people who turn 19 in the month; 65 young people are due to turn 19 in 2012/13. Monthly percentages for this indicator are therefore based on small numbers and should be interpreted with care. The status of the young people concerned needs to be in established within four months of leaving care otherwise they cannot be counted as in EET or in suitable accommodation. Accommodation is deemed suitable if it provides safe, secure and affordable provision for young people.

#### Op147 Care leavers in suitable accommodation

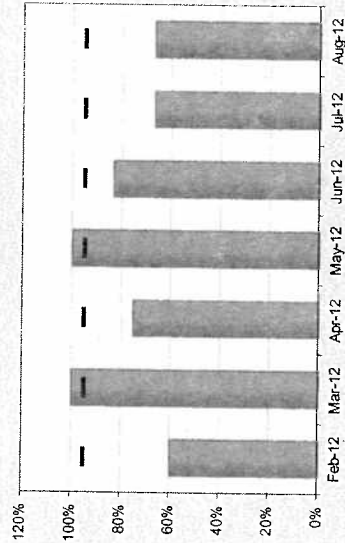
Recent trend (last 6 months)	Key	Feb-12	Mar-12	Apr-12	May-12	Jun-12	Jul-12	Aug-12	Traffic Light
Haringey		60%	100%	75%	100%	83%	67%	67%	Red
Haringey Target	I	95%	95%	95%	95%	95%	95%	95%	●

#### Performance Comment

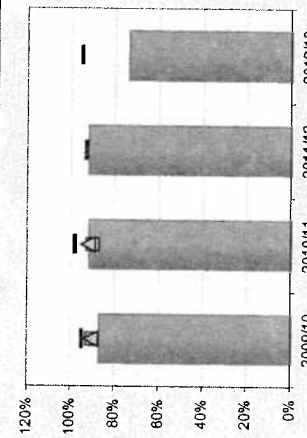
- 74% (17 out of 23) of care leavers for the year to date were in suitable accommodation, against a 95% target.  
- 2 out of 3 young people who left care in August were in suitable accommodation.

#### Service Comment

The numbers are small and therefore data needs to be interpreted with care, however those that were not in suitable accommodation during this timeframe where either held in custody or found to have All Rights of Appeal Exhausted, or not in touch due to warrant for arrest.



Long term trend (last 6 years)	Key	2006/07	2007/08	2008/09	2009/10	2010/11	2011/12	2012/13	Traffic Light
Haringey		-	-	-	87%	92%	92%	74%	Red
Haringey Target	I	-	95%	95%	95%	98%	93%	95%	●
Statistical Neighbours	Δ	92%	92%	89%	91%	92%	-	-	
London	◇	89%	90%	88%	-	-	-	-	
England	□	87%	88%	90%	90%	90%	-	-	



## Op148 Care leavers in education, employment or training

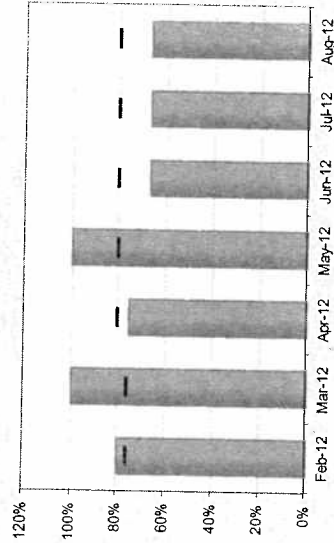
Recent trend (last 6 months)	Key	Feb-12	Mar-12	Apr-12	May-12	Jun-12	Jul-12	Aug-12	Traffic Light
Haringey	■	80%	100%	75%	100%	67%	67%	67%	Red
Haringey Target	■	76%	76%	80%	80%	80%	80%	80%	●

## Performance Comment

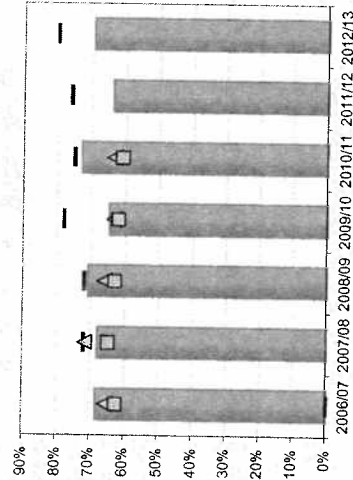
- As at the end of August 16 out of 23 care leavers (67%) were in education, employment or training (EET), below the 80% target.
- This figure compares favourably with statistical neighbours.

## Service Comment

The numbers are small and therefore the data needs to be interpreted with care, however those not in ETE during this time frame this was either due to having All Rights of Appeal Exhausted, NRPF and therefore not eligible for ETE, in custody with no ETE, or not in touch due to a warrant for arrest.



Long term trend (last 6 years)	Key	2006/07	2007/08	2008/09	2009/10	2010/11	2011/12	2012/13	Traffic Light
Haringey	■	68%	68%	71%	65%	73%	64%	70%	Red
Haringey Target	■	-	72%	72%	78%	75%	76%	80%	●
Statistical Neighbours	△	66%	72%	66%	63%	63%	-	-	
London	◆	66%	68%	65%	67%	-	-	-	
England	□	63%	65%	63%	62%	61%	-	-	

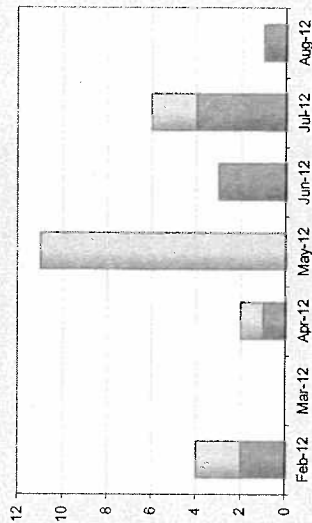


### Adoption and Special Guardianship Orders

This section provides information on the volume of adoptions and special guardianship orders and the timeliness of placements of looked after children for adoption following an agency decision (% placed within 12 months). It also provides a monthly update on the three key adoption scorecard indicators A1, A2 and A3 relating to the timeliness of the adoption process. For further long term trend data, benchmarking, contextual data and performance against national adoption indicators, please refer to Appendix B, the Adoption Scorecard quarterly update. Please note that this is only updated quarterly due to the relatively small number of children involved - more regular updates may be misleading as small variations can skew the outcomes.

Op 418 Number of adoptions/special guardianship orders  
Op 418a Number of adoptions  
Op 418b Number of special guardianship orders (SGOs)

Recent trend (last 6 months)	Key	Feb-12	Mar-12	Apr-12	May-12	Jun-12	Jul-12	Aug-12	Traffic Light
Haringey (Adoptions and SGOs)		4	-	2	11	3	6	1	Data Only
Haringey- Adoptions		2	-	1	-	3	4	1	
Haringey- SGOs		2	-	1	11	-	2	-	



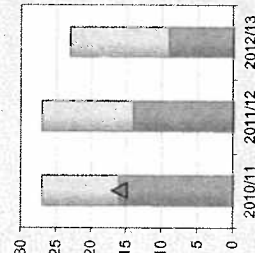
#### Performance Comment

- There have been 9 adoptions in the year, 1 of these in August. The target set for adoptions is 15 and we are on track to meet this. This compares with 5 adoptions and 5 SGOs at this point last year.
- There have been 14 special guardianship orders in the year to date; more than there were in all 2011/12.

#### Service Comment

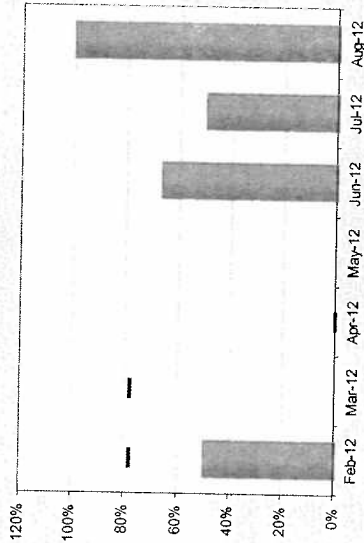
The additionality has been achieved with improved systems for monitoring, creative efforts by the staff concerned and some additional staffing.

Long term trend (last 6 years)	Key	2006/07	2007/08	2008/09	2009/10	2010/11	2011/12	2012/13	Traffic Light
Haringey (Adoptions and SGOs)		-	-	-	-	27	27	23	Data Only
Haringey- Adoptions		-	-	-	-	16	14	9	
Haringey- SGOs		-	-	-	-	11	13	14	
Stat. Neighbours (adoptions only)	▲	19	18	17	17	16	-	-	



**Op391 Timeliness of placements of looked after children for adoption following an agency decision that the child should be placed for adoption**

Recent trend (last 6 months)	Key	Feb-12	Mar-12	Apr-12	May-12	Jun-12	Jul-12	Aug-12	Traffic Light
Haringey	■	50%	-	-	-	67%	50%	100%	
Haringey Target	■	78%	-	-	-	-	-	-	



**Performance Comment**

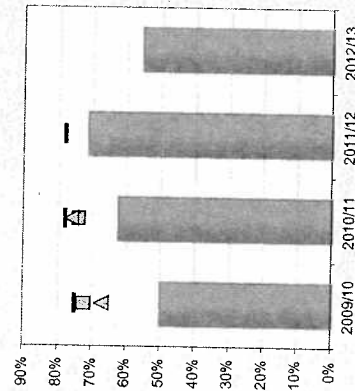
- This indicator is included for information but is superseded by the new adoption scorecard indicators listed below.

- In the year to August 5 out of 9 looked after children (56%) were placed for adoption within 12 months of the decision that they should be placed for adoption.
- This represents a decline in performance from 2011/12 (71%) and is below latest benchmarking data for statistical neighbours (76% in 2010/11).

**Service Comment**

This indicator remains challenging as once the 12 months have passed, the target is not met, regardless of how long or how soon afterwards the child is placed. That placement will count as 'target not met' until all children who have waited longer than 12 months are placed. This is being monitored using the same systems as Op418.

Long term trend (last 6 years)	Key	2006/07	2007/08	2008/09	2009/10	2010/11	2011/12	2012/13	Traffic Light
Haringey	■	-	-	-	50%	63%	71%	56%	
Haringey Target	■	-	72%	-	75%	78%	78%	-	
Statistical Neighbours	△	68%	66%	79%	67%	76%	-	-	
London	◆	65%	71%	77%	74%	-	-	-	
England	□	75%	76%	75%	72%	74%	-	-	



HY483

### Average days from becoming looked after to being placed for adoption for children adopted in period (Adoption Scorecard Indicator A1)\*

\* This figure relates to adopted children only  
(it excludes children placed for adoption)

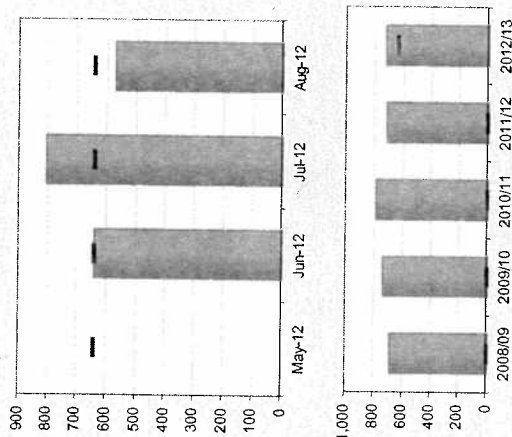
Recent trend	Key	Feb-12	Mar-12	Apr-12	May-12	Jun-12	Jul-12	Aug-12	Traffic Light
Haringey		-	-	797	N/A	639	805	571	Red
National Threshold		-	-	639	639	639	639	639	

#### Performance Comment

- The average days from becoming looked after to being placed for adoption was 722 days for the period April to August 2012. This is above the 639 day target (rolling 3 years) which is based on national threshold levels for 2010-2013 and slightly above the 2011/12 figure of 715 days.
- The one child adopted in August took 571 days better than the national threshold level.
- The service are looking at setting targets specific to Haringey taking account of the children already in the system and the new children coming into the system with an aim to outstrip the 639 day threshold for new children.

#### Service Comment

The service are looking at setting targets specific to Haringey taking account of the children already in the system and the new children coming into the system with an aim to outstrip the 639 day threshold for new children. Currently the service are working to a universal 3 month target between the achievement of a placement order to identification of permanent placement. There are 61 children whose plan for adoption has been approved as at the end of August, 14 of these have been placed for adoption. Of the 61 children 19 have had the decision made this year and the average days looked after for these children as at the 1st September is 450 days. The average days for the decision to be made is 348.

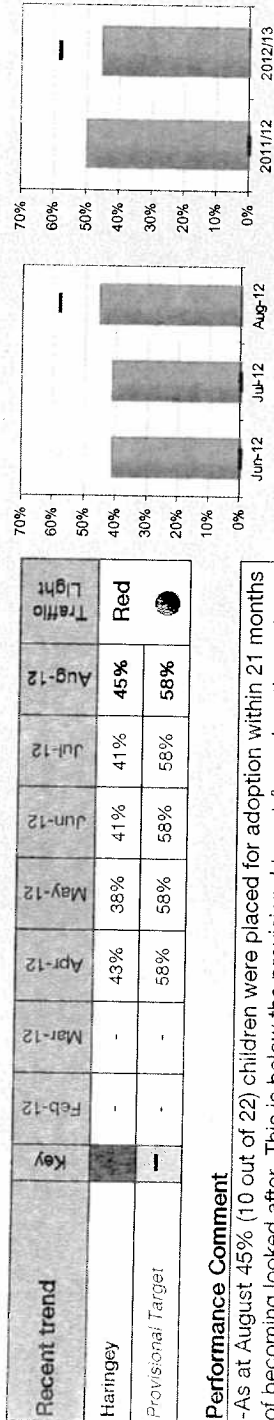


Long term trend	Key	2006/07	2007/08	2008/09	2009/10	2010/11	2011/12	2012/13	Traffic Light
Haringey		-	-	686	736	784	715	722	Red
National Threshold		-	-	-	-	-	-	639	

Three year average	2008-11	2009-12
Haringey	739	747
Statistical Neighbours	717	
England	625	

**Op486 Placed for adoption within 21 months of becoming looked after  
(Adoption Scorecard Indicator A3)\***

\* This figure relates to adopted children and children placed for adoption. Figures shown are year to date figures as at the end of the month indicated.



**Performance Comment**

-As at August 45% (10 out of 22) children were placed for adoption within 21 months of becoming looked after. This is below the provisional target (based on the national average)

**Service Comment**

A number of the children placed for adoption in the time period had been looked after for some considerable time. The increased volume of placements made includes children who have been looked after for some time which impacts negatively on the percentage placed within 21 months. There are a number of very young children and 3 relinquished babies, for whom placements have been identified, which will impact positively on this indicator. Increased management scrutiny through permanency tracking and adoption linking meetings will assist in achieving the target of adoption within 21 months.

Long term trend	Key	2006/07	2007/08	2008/09	2009/10	2010/11	2011/12	2012/13	Traffic Light
Haringey		-	-	-	-	-	50%	45%	Red
Provisional Target		-	-	-	-	-	-	58%	

Three year average	2008-11	2009-12
Haringey	41%	41%
Statistical Neighbours	54%	
England	58%	

Average time between a local authority receiving court authority to place a child and the local authority deciding on a match to an adoptive family (days)

(Adoption Scorecard Indicator A2)

**Performance Comment**

- Haringey's 3 year average (2008-11) is 239 days from the local authority receiving court authority to place a child and matching with an adoptive family.
- The national threshold for 2010-13 is 213 days, so based on 2008-11 levels Haringey is 26 days short of the threshold.
- Measuring progress on this indicator is reliant on CAFCASS releasing data at local authority level.

Three year average	2008-11
Haringey	239
Statistical Neighbours	172
England	132

**Service Comment**

As with Op391, monitoring systems and additional resource are speeding up family work. The numbers will come down as the number of children who have already waited a long time are placed.

This page is intentionally left blank





**Haringey Council**

<b>Report for:</b>	<b>Corporate Parenting Advisory Committee</b>	<b>Item Number:</b>	
<b>Title:</b>	<b>Academic Progress Report for Haringey Children in Care 2012</b>		
<b>Report Authorised by:</b>	<b>Debbie Haith</b>		
<b>Lead Officer:</b>	<b>Attracta Craig – Head of Virtual School</b>		
<b>Ward(s) affected:</b>		<b>Report for Key/Non Key Decisions:</b>	

**1. Describe the issue under consideration**

To report to Members on the progress and results for Children in Care at the end of Reception, Key Stages 1, and 2 and 4

To update Members on the progress of Haringey's Undergraduates/Graduates and new University Entrants

To update Members on developing work in raising the attainment of Children in Care

**2. Cabinet Member introduction**

Haringey Council aims for the children and young people in its care to be successful in education and be equipped with life tools to make appropriate choices to progress through education and into employment.

**3. Recommendations**

**4. Other options considered**

**5. Background information**



**Haringey Council**

## **5.1. Summary of the education attainment Haringey Children in Care.**

### **5.1.1 GCSE results 2012**

#### ***Year 11s in care for a year prior to 1st September 2012***

There were 45 young people in care in Year 11, i.e. in care as of Sept 1<sup>st</sup> 2011 and were still in care at the point of taking examinations.

All references to 'GCSEs' includes qualifications equivalent to GCSEs.

***The results for 2012 are:***

5+ GCSEs at grades A\*-C incl. English and Maths : 20.5% (9/44)  
 5+ GCSEs at grades A\*-C : 36.4% (16/44)  
 5+ GCSEs at grades A\*-G : 52.3% (23/44)  
 1+ GCSEs at grades A\*-G : 79.5% (35/44)

Other qualifications : 11.4% (5/44)  
 No qualifications : 9 % (4/44)  
 SEN : 21% (9/44)

#### ***Comparing with similar previous Year 11 cohorts***

	2008	2009	2010	2011	2012
Number of young people	40	48	48	49	44
5A*-C with Eng & Maths	N/A	N/A	16.7% (8/48)	12.3% (6/49)	20.5% (9/44)
5A*-C	22.5% (9/40)	31.3% (15/48)	31.3% (15/48)	18.4% (9/49)	36.4 (16/44)
5A*-G	47.5% (19/40)	52.1% (25/48)	37.5% (18/48)	36.7% (18/49)	52.3% (23/44)
1A*-G	62.5% (25/40)	66.7% (32/48)	66.7% (32/48)	65.3% (32/49)	79.1% (35/44)
Young people with Statements	35% (14/40)	25% (12/48)	27% (13/48)	22.4% (11/44)	22.7% (10/44)



**Haringey Council**

(more detailed information in Appendix A)

This is a strong set of GCSE results. These young people have benefited from additional input during their time in secondary school. The focus of additional support was to enhance their learning opportunities outside of school hours and to emphasise the importance of a learning household. The majority of young people engaged with at least one of the following:

- 10 hours After school hours home tuition in English or Maths per year
- 'Big Green Envelope' to help them build their own 'libraries' and support the learning environment with foster carers.
- SAM-Learning, an online revision programme
- University taster days
- Weekly Study Club – local academic support
- Cooking Club through Tottenham Hotspur Foundation (THF)
- South Africa project in partnership with THF (4 young people)

### 5.1.2 Early Years Foundation Stage Scores 2012

The Early Years Foundation Stage Profile (EYFSP) is the statutory end of year assessment tool for children reaching the end of the Early Years Foundation Stage before they transfer to Year.

There were 21 children in care of 'Reception' age, during the academic year 2011-2012.

Children who achieve an total scale score of 78 or more across the EYFS profile are assessed as working securely within the Early Learning Goals. However, to achieve a 'good level of development' a child must also achieve a 6 in all of the seven scales within 'Personal, social and emotional development' (PSED) and 'Communication, language and literacy' (CLL). The expectation is that these children will make national average progress during Key Stage 1.

Achieving a 'good level of development' as measured by the EYFSP:

Haringey Children in Care	: 33% (7/21)
All Haringey Children	: 57%

3 of children achieved a score of 78 and above, putting them in the middle range. However, they are not counted as achieving a 'good level of development' because of dips in the areas of PSED and CLL.

Neurological research into brain development now highlights the negative impact of early neglect and trauma on attachment patterns and language and communication. This commonly manifests itself in a developmental delay in the areas of 'personal, social and emotional' and 'communication, language and literacy' skills. Haringey Virtual School is continuing to work with Haringey's Early Years Advisory Service to develop this work and extend understanding on how to effectively intervene so that the gap between these children and their peer group can be narrowed during foundation stage and key stage 1.

### 5.1.3 Key Stage 1 results 2012

There were 17 children in care in Year 2 i.e. in care as of Sept 1<sup>st</sup> 2011.

***The results for 2012 are:***



**Haringey Council**

Level 2 in English : 82.4% (14/17)  
 Level 2 in Maths : 82.4% (14/17)  
 Level 2 in English and Maths : 76.4% (13/17)

Number of children with Statements : 0%

***Comparing with similar previous Year 2 cohorts***

	2008	2009	2010	2011	2012
Number of children	11	11	11	14	17
Level 2 in English	72.7% (8/11)	90.1% (10/11)	54.5% (6/11)	71.4% (10/14)	82.4% (14/17)
Level 2 in Maths	81.8% (9/11)	90.1% (10/11)	45.5% (5/11)	57.1% (8/14)	82.4% (14/17)
Level 2 in English and Maths	72.7% (8/11)	90.1% (10/11)	45.5% (5/11)	57.1% (8/14)	76.5% (13/17)
Children with Statements	9% (1/11)	0% (0/11)	0% (0/11)	21.4% (3/14)	0% (0/17)
Children in special provision	9% (1/11)	0% (0/11)	0% (0/11)	7.1% (1/14)	0% (0/17)

(more detailed information in Appendix A)

This is good set of Key Stage 1 results.

**5.1.4 Key Stage 2 results 2012**

There were 21 children in care in Year 6 i.e. in care as of Sept 1<sup>st</sup> 2011.

***The results for 2012 are:***

Level 4 in English : 66.7% (14/21)  
 Level 4 in Maths : 47.6% (10/21)


**Haringey Council**

Level 4 in English and Maths

: 47.6% (10/21)

Number who sat SATs

: 85.7% (18/21)

Number of children with Statements

: 23.8% (5/21)

**Comparing with similar previous Year 6 cohorts**

	2008	2009	2010*	2011	2012
Number of children	22	22	17	28	21
Level 4 in English	63.6% (14/22)	50% (11/22)	52.9% (9/17)	42.8% (12/28)	66.7% (14/21)
Level 4 in Maths	63.6% (14/22)	45.4% (10/22)	52.9% (9/17)	53.6% (15/28)	47.6% (10/21)
Level 4 in English and Maths	54.5% (12/22)	45.4% (10/22)	47% (8/17)	39.2% (11/28)	47.6% (10/21)
Children with Statements	18.1% (4/22)	45.4% (10/22)	23.5% (4/17)	17.9% (5/28)	23.8% (5/21)
Children in special provision	9% (2/22)	22.7% (5/22)	17.6% (3/17)	10.7% (3/28)	15% (3/21)

\* 2010 results are based on actual SATs results for young people who attended schools not affected by the 2010 SATs boycott and teacher assessments for those who were.

( more detailed information in Appendix A)

The English SATs results are encouraging with over two thirds achieving national average or above. The Big Green Envelope, Reading Club, Reading Recovery intervention and training of foster carers have all additionally supported the improvement of the literacy levels of primary children in care. Also promotion of reading runs through all of the work e.g. promotion of books at the cinema event.

The Maths results are less encouraging, and indicate that a closer focus on maths attainment is necessary to further narrow this gap for children in care. The 'Games Club' ran for 6 weeks to raise the Maths attainment of primary aged pupils. 13 children and their carers attended the club. The



## **Haringey Council**

Haringey Maths advisor and Haringey Virtual School teacher ran these sessions, focussing on 'Understanding pattern in number'. This included times tables, place value, repeated addition and addition/subtraction relations. Research (National Strategies Primary Research Project, 2010) shows that these elements can present barriers to basic understanding of Maths. As the Games Club was well received by carers and children, it will be repeated this academic year. We will continue to work with the Early Years Advisory Team and the Maths Advisor to support accelerated progress in Maths.

### **5.1.5 Post 16 update 2012**

#### **Interventions to support education pathways specifically post 16**

Links have been developed with **IntoUniversity** who offer support and advice in regards to personal statements. We have also had one of our young people selected as part of their corporate mentoring scheme.

To support the embedding of the post 16 education agenda, guidance is being updated and reviewed. This includes the **Higher Education, Staying Put** and the **Post 21 guidance**. This will ensure that workers and young people can be clear on entitlements and additional support available in line with statutory requirements.

Funding for young people engaged in education post 16 comes from Government sources in the form of payments to colleges, student finance and 16-19 bursaries paid directly to young people. As a local authority we are responsible to provide a minimum of £2000 to support young people in Higher Education for the duration of their course.

#### **Interventions to support engagement in education pathways specifically post 16**

Currently we have 27 young people who are part of the **E18HTEEN** project which is run by Tottenham Hotspur Foundation. A further 13 young people are in the process of being recruited. The project works to support young people who are NEET or have the potential to become NEET. The project provides the young people with a mentor who supports them to engage in a range of opportunities in order to gain qualifications, experience and focus. The project was jointly developed by a member of Haringey Virtual School alongside a member of Tottenham Hotspur Foundation. Together they secured funding from the Greater London Authority for £190,000 with each of the London boroughs of Haringey, Barnet, Enfield and Waltham Forest contributing £20,000 over 2 years and £30,000 from Tottenham Hotspur Football Club. The project started in June 2011 for 2 years. Work is now being done to seek future funding. HVS Teacher has provided paid consultancy work developing the project through the first year.

Over the next two years 6 young people aged 18-25 from Haringey will have an opportunity to be part of the **Wilkommen** project. This is funded by the European Commission and is being coordinated by Care2Work. The 6 young people will have the opportunity to take part in work experience at the Marriott Hotel in Grosvenor Square London followed by 2 weeks at the Renaissance Hotel Karlsruhe in Germany.

*Due to confidentiality constraints in regards to the disclosing of a young person's care status, all post 16 education information has to be gathered via Social Worker, Personal Advisor or young person.*

**An overview of young people's level 3 and above educational achievements.**  
**University**



**Haringey Council**

- 6 Young people have graduated from University
- 30 are progressing onto their next year at University
- 8 are starting University September 2012

**Level 3 qualifications**

- 13 young people in years 13 and 14 achieved a level 3 qualification
- 14 young people in years 12 and 13 have achieved AS-Levels and will progress onto doing their A levels in September 2012

**Further Education information on young people 20+**

- 2 young people have achieved an alternative qualification to access University
- 4 young people have achieved a level 3 qualification.

(more detailed information in Appendix A)

## **5.2 Strategies to support the educational progress of Haringey Children in Care**

### **Nursery to University:**

The booklet has been put together and now updated to support Social Workers, Foster Carers and Independent Reviewing Officers as they work with other professionals in meetings, specifically PEPs. This booklet focuses on the range of things that need to be considered during a young person's journey through education.

### **Haringey Virtual School Website:**

The website has been updated and reviewed in order to provide additional support and advice to children, young people and those who work with them. [www.haringey.gov.uk/hvs](http://www.haringey.gov.uk/hvs)  
Carers, schools and social worker used the website to nominate young people for the education achievement awards.

### **Partnerships with other organisations:**

Providing opportunities for young people to see themselves in new environments and develop aspirations has been a key contributor to the focus of the work of the Virtual School. We have linked with the following organisations in order to deliver this as our own funding streams have reduced.

#### **Tottenham Hotspur Foundation**

Since 2004 we have linked with Tottenham Hotspur Foundation on a number of projects including 'To Care Is To Do', a 3 year programme funding by Premier League and Haringey Council and the 'South Africa Project' funded by Premier League and Haringey Council.

The work this year included: the Annual Education Awards Ceremony, this will be the 9<sup>th</sup> Awards ceremony; Study Club support; Work Experience for young people; 'Let's get Cooking' and on going mentoring contact for those who were part of the South Africa project.

#### **Highgate Independent School**

Young people had opportunities to see inspirational chemistry presentations at Highgate Independent School, motivating them to be inquisitive learners.



## **Haringey Council**

Haringey Virtual School has also been part of a planning team to develop an innovative Chrysalis programme for children in care who had achieved Level 4 or above in their Key Stage 2 SATS or have the potential to progress into University. In September a pilot day was run at Highgate for children in years 6 and 7. The day was a great success inspiring both foster carers and children.

### **Cambridge University**

Young people attended 'Realise' days at Cambridge University. Young people in care seldom consider the possibility progressing to University. The person who lead on this work is a care leaver who graduated from Cambridge University, She spoke at the 2011 Educational Awards Event giving a motivational talk to the young people. She is now a Trustee at Who Cares Trust and continues to support our work on the Chrysalis project with Highgate Independent School.

### **Kate Cairns Associates**

Kate Cairns delivered a conference in July 2010 on the impact of trauma on Children in Care. She was subsequently impressed with the on-going work of the multi-disciplinary 'Trauma Working Party'. She is working with us to extend this work.

The DFE interested in the positive impact it could have on behaviour and learning. Haringey schools are involved in the development of this work.

Kate Cairns will be returning to Haringey in October 2012 to progress this work with Haringey Schools.

## **5.3 Developments for the Academic Year 2012/13**

The Study club for secondary aged young people in care has been re- located to Tottenham Hotspur Football Club. Carers and young people have responded very positively to the new venue. This development is intended to link young people to the extensive programme of activities operating from the Club in addition to academic support offered through the Study Club

The Annual Education Achievement Awards Event has been run in partnership with the Tottenham Hotspur Foundation since 2004. This year, the Foundation is leading on the organisation and delivery of this event.

'IntoUniversity' is a national charity located in Tower Gardens, Haringey. We are pleased to report that a number of local foster carers have enrolled children for September 2012 onto the 'IntoUniveristy Academic Support' for primary aged pupils.

The updated 2012/13 Haringey PEP has to be completed and signed by the school designated teacher and includes a section on the use of LAC PPG. Joint training, co-delivered by a Haringey DT and SW, is scheduled to be repeated termly during 2012/13.

The first Secondary Transition Forum specifically for carers of children in care took place September 2012. In December a similar forum will be held for carers with children who are seeking a Reception school place for September 2013



Document is exempt

This page is intentionally left blank

Document is exempt

This page is intentionally left blank

By virtue of paragraph(s) 1, 2 of Part 1 of Schedule 12A  
of the Local Government Act 1972.

Document is exempt

This page is intentionally left blank